

POLESTAR

kano

800BAFCO
www.bafco.com



Inspired by Innovation, Driven by Comfort.

The Polestar chair draws inspiration from the groundbreaking leaps in electric car design and the iconic Polestar brand. With its breathable mesh, ergonomic support, and futuristic aesthetics, it redefines workspace seating. Elevate your office with a chair that mirrors the precision and innovation of cutting-edge automotive design.

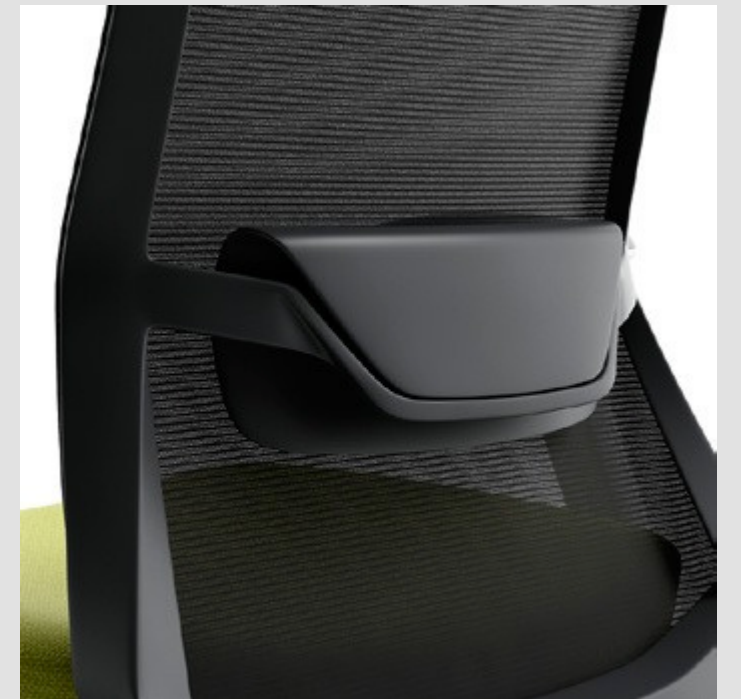








Breathe Easy, Work Better –
Designed for Comfort.



Engineered for Balance,
Built for Brilliance.





Sleek Design, Unmatched Support – Inspired by the Future.



Function

- Adjustable Seat Height
- Adjustable Headrest
- Adjustable Lumbar Support with PU Soft Cushion
- Multi-Locking Tilting System

3D Adjustable Armrest

- Lifting, Sliding and Rotate Functions

Fixed Armrest

- PP Surface and PU Soft Surface Two Options

Various Mechanism Options:

- Synchronized Tilting Mechanism with Multi-Locking & Auto Tension Control
- Synchronized Tilting Mechanism with Single Locking
- Standard Tilting Mechanism with Single Locking



Product Line



EJX80.SW 700*600*1225 EJX81.SW 700*600*1225 EJX60.SW 665*600*1010 EJX61.SW 665*600*1010



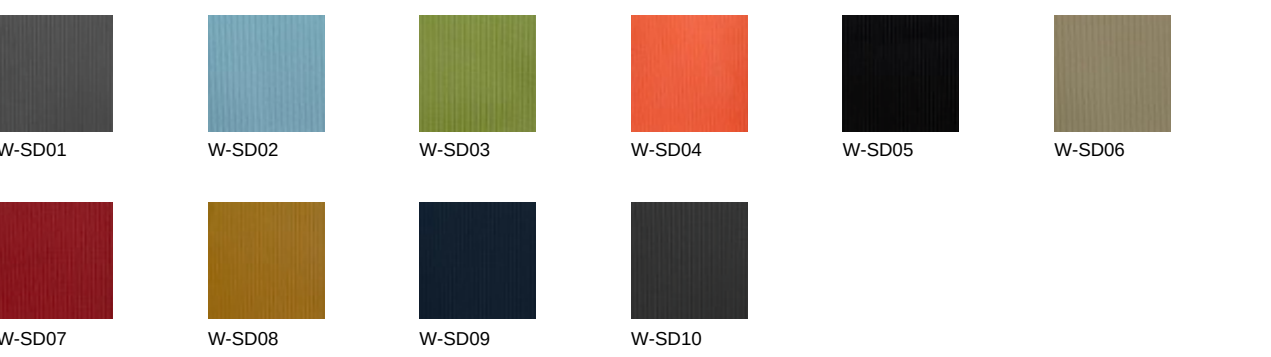
EJX62.SW 665*600*1010 EJX63.SW 665*600*1010 EJX64.TW 665*600*1010 EJX65.TW 665*600*1010



EJX66.TW 665*600*1010 EJX67.TW 665*600*1010 EJX70.GW 680*630*1040 EJX71.GW 680*630*1040



Back Mesh



Seat Fabric

