

PROMAX+



800BAFCO
www.baftco.com





**Active Ergonomics for the
Modern Workplace**

Designed to move naturally with the body while
providing continuous support.

Patented Active Back Support
from South Korea



Dynamic Support For Dynamic Work

Designed to adapt naturally to changing postures and movements.



Smarter Ergonomics, Simplified.

Advanced synchro technology
delivers personalized comfort
with minimal adjustment.



Adaptive Comfort Through Intelligent Design.

The active hinge technology creates a seating experience that feels fluid, responsive, and supportive.



Trusted in the UAE

Locally crafted with precision, flexibility,
and fast project responsiveness.



مصرف الإمارات العربية المتحدة المركزي
CENTRAL BANK OF THE U.A.E.



بلدية مدينة أبوظبي
ABU DHABI CITY MUNICIPALITY

مطارات دبي

DUBAI AIRPORTS

Connecting the World



ديوا
dewa



بلدية دبي
DUBAI MUNICIPALITY



الاتحاد للقطارات
ETIHAD RAIL



Certified Ergonomic Performance.

PROMAX+ is **EN 1335** tested and certified to meet international ergonomic seating standards.



ميديل ايست لخدمات الفحص
METS Middle East Testing Services

TEST REPORT Report No.: METS-R 12264/2023

Client / Establishment : M/s. BAFCO TRADING LLC
DIC BAFCO Factory - 8th Roundabout - Dubai Industrial City - Dubai
United Arab Emirates


Sample ID : METS-S23-12264
Sample Receiving Date : 21/10/2023
Reporting Date : 27/10/2023
Date of Analysis : 21/10/2023-27/10/2023
Tested by : RR/SC
Issue No : 01 (Re-Issue Date: NA)


Sample Information:
Sample Description : PROMAX OFFICE CHAIR BY BAFCO

Brief Evaluation of the Results

METS-S23-12264	Test	Compliance*
	Physical Analysis	Pass

*The tested parameters comply with EN 1335-2:2018 Office furniture - Office work chair - Part 2: Safety requirements
The corresponding test results are furnished in following page.

Prepared by

Chemist
Material Science Division (MSD)
Employee Code: METS AJ EC 180

Verified by

Team Head
Material Science Division (MSD)
Employee Code: METS AJ EC 110

Form MRF-27 Issue No: 2

Page 1 of 3

ALJAH - U.A.E. +971 6 744 5538
ABU DHABI - U.A.E. +971 2 444 2383
DOHA - QATAR +974 77829070
E-mail: lab@metslab.com
Web: www.metslab.com

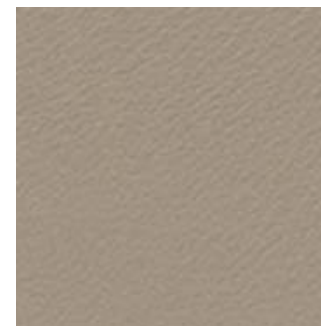
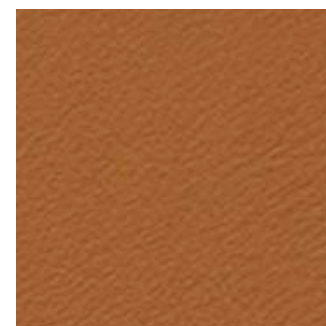
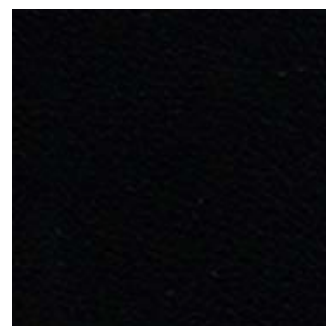
* Ergonomically tested and certified in South Korea, Portugal and United Arab Emirates.

**Executive Comfort,
Refined.**

PROMAX+ combines advanced ergonomic engineering with the warmth and sophistication of a fully upholstered executive chair.



Vegan Leather Options



**Modern Ergonomics,
Made in the UAE.**



Product Line



Upgrade Options



Polished Aluminum Starbase



Padded & Fully Upholstered

Mesh Back



Fabric Seat

